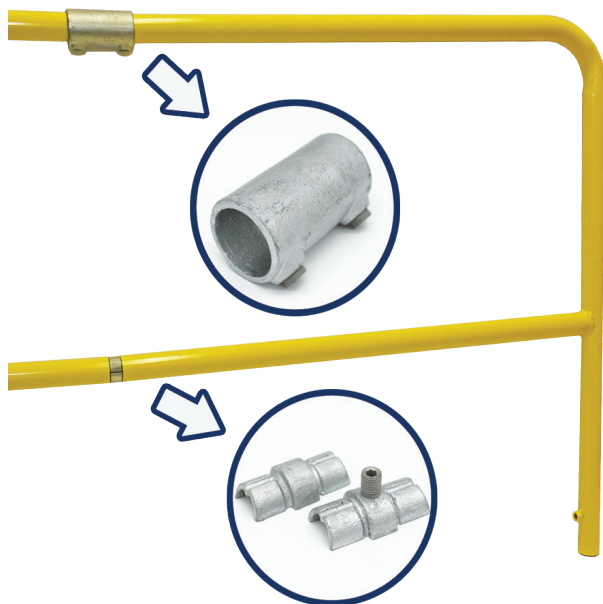
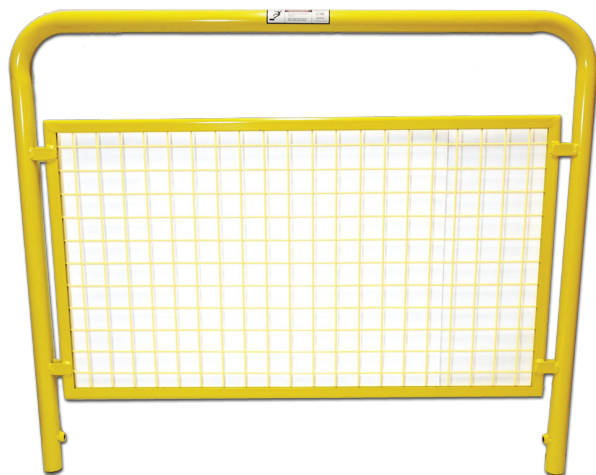


ACCESSORIES

Splice fittings are used to create custom sizes on the fly. Interior and exterior options are available.



Infill panels are available as well for a more architectural look.



ABOUT US

Fall Protection Solutions (FPS), a division of Strut Systems Installation LLC, is owned and operated by the Eberl family. It was created to focus on the needs of customers looking for high quality, installed Fall Protection Systems and Services.

Our environmentally conscious, recycled rubber base systems dampen vibrations and help extend roof life, while providing stable support for your roof guardrail systems.

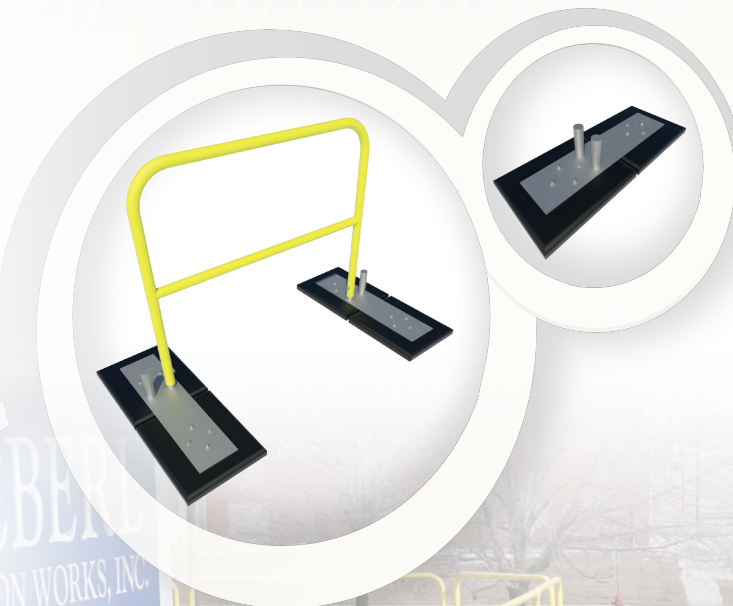
The versatility and adjustability that has been engineered into our component-based design ensures a quick and easy installation process for you and your crew.

Save time and labor with our fully engineered, pre-built roof guardrail solutions.



103 Sycamore Street
Buffalo, New York 14204
Phone: (716) 332-6983 Toll Free: (855) 202-7222
Email: sales@fallprotected.com

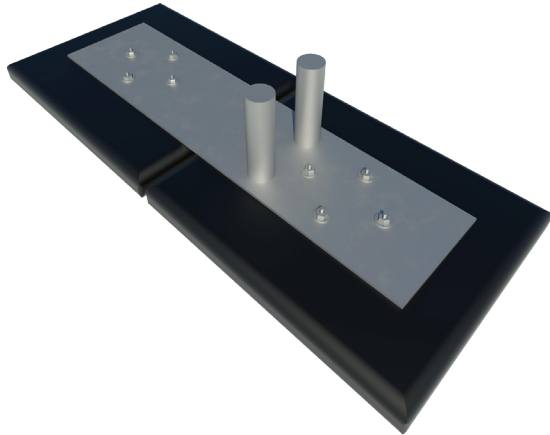
fallprotected.com



OSHA COMPLIANT
**ROOF
GUARDRAIL**

*Worker Safety Begins with
Fall Protection Solutions*

BASE



Fall Protection Solution's non-penetrating bases are made 100% recycled ground crumb rubber. They are safe to use on any roofing material.

Bases provide safe, stable footing for the railing system.

Base Specifications:

Weight: 70 lbs

Length: 36 inches

Width: 14-1/2 inches

Height: 2-1/2 inches

SAFETY SPECS

MEETS OSHA REQUIREMENTS

When assembled properly, Fall Protection Solution's Roof Guardrail System meets OSHA Compliance Standards for the following requirements:

(Standard 29-CFR) 1910.29

(Standard 29-CFR) 1926.502

IBC 2002

- Top rail loading of 200 lbs in downward or outward direction
- Mid rail loading of 150 lbs in any downward or outward direction
- 1.66" outside diameter round pipe
- Top Rail 42" (+/- 3") above walking surface
- Mid Rail at 21" above walking surface

fallprotected.com

RAILING

Railings are fabricated in house from 1-1/4 inch steel tubing. Available in hot dip galvanized (ASTM 123), or powder coated.

Stocked sizes:

48 inch

72 inch

96 inch

120 inch

Custom sizes are available upon request

U.S. Patent No. D880,003

